



## Installation Guide

### 1 Overview

The complete system control suite from VIA Mainboard. FliteDeck empowers the user by enabling full system control through an easy to use Windows®-based management suite. FliteDeck comprises four utilities, SysProbe, MissionControl, JetStream, and FlashPort.

### 2 System Requirements

In order to install the FliteDeck management suite, the system must have the following configuration:

- Microsoft operation system Windows® 98, Windows Me, Windows 2000 or Windows XP
- VPSD Mainboard
- 7MB of available hard drive space.

### 3 First Time Installation

If this is the first time you have installed FliteDeck Rev. 1.14, please follow these step-by-step instructions. The following window will appear when you execute "Setup.exe" (See Figure 1). Click the "Next" button to start the installation process, or click the "Cancel" button to terminate the installation.

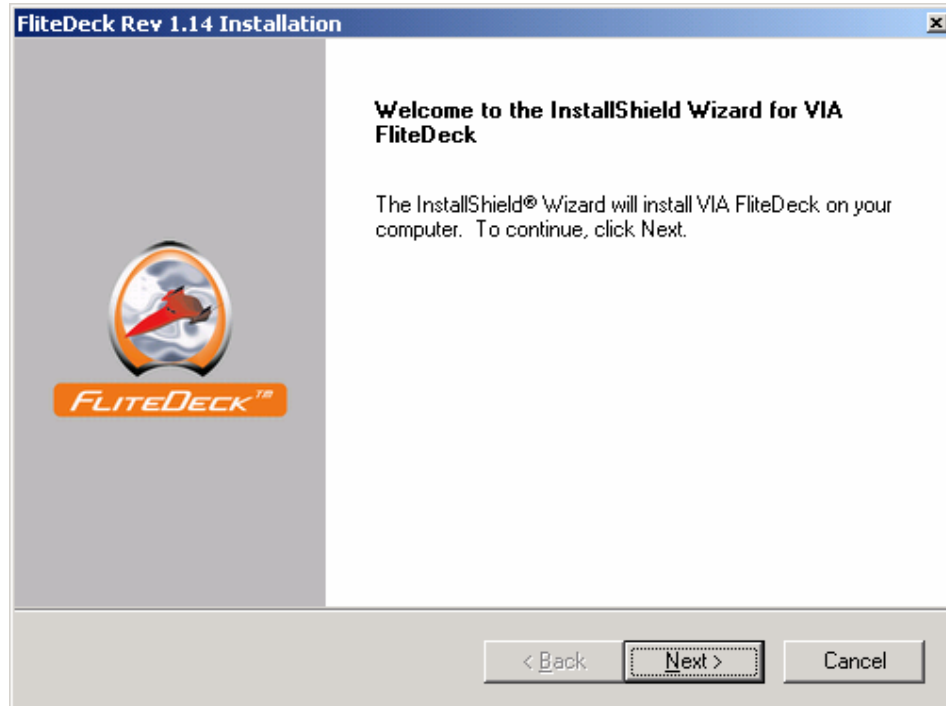


Figure 1: InstallShield Wizard





## Installation Guide

### 3.1 JetStream Warning Dialog

Before proceeding, please read the "JetStream Warning Dialog" and click the "Yes" button if you agree and wish to install it. Click the "No" button if you want to terminate installation. Click the "Back" button to return to the previous step. (See Figure 2)

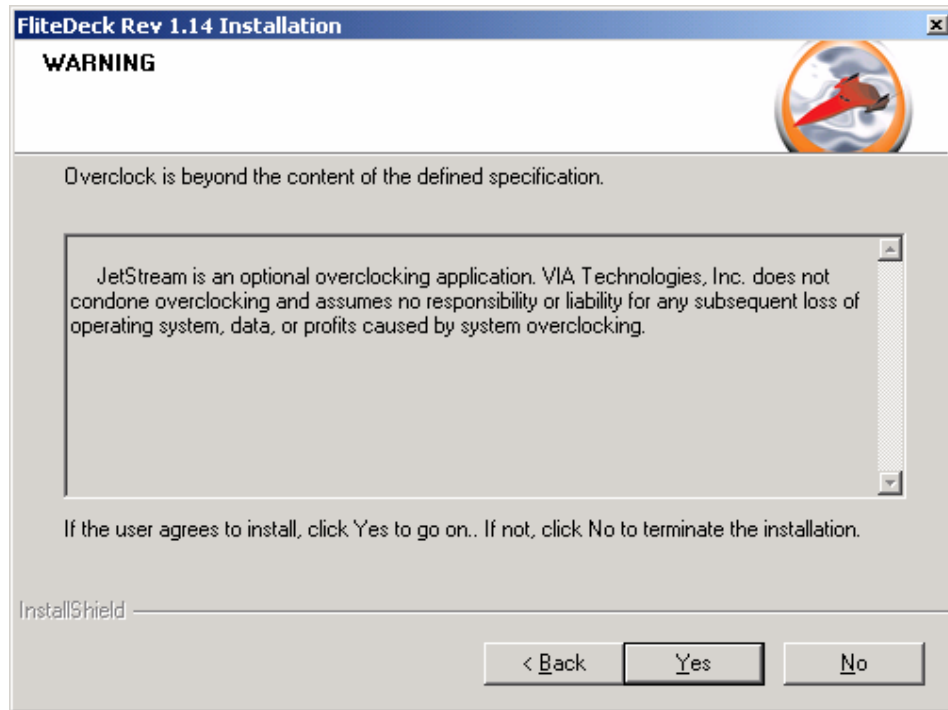
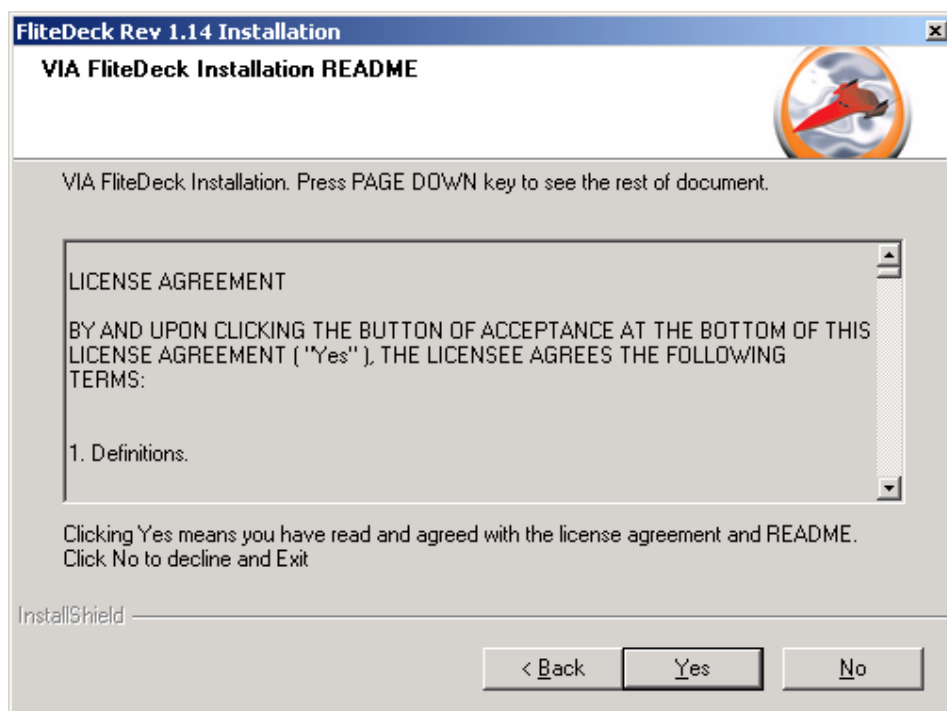


Figure 2: JetStream warning dialog

### 3.2 License Agreement Dialog

Please read the "License Agreement" and click the "Yes" button if you accept all the items and wish to proceed. Click the "No" button if you do not agree and wish to terminate the installation. Click the "Back" button to return to the previous step. (See Figure 3)





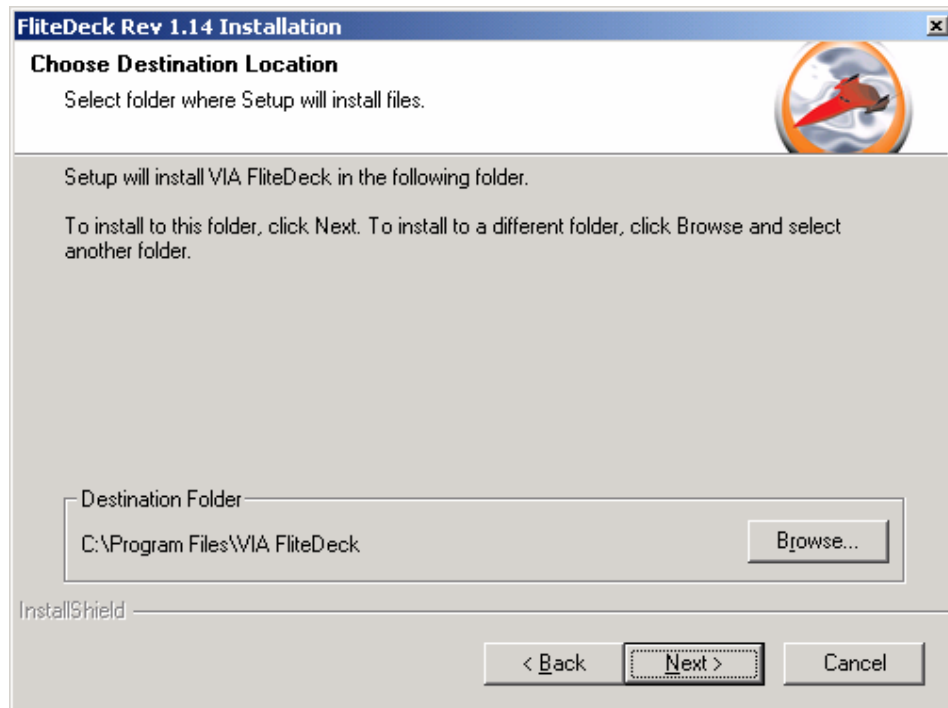
**Figure 3: License agreement dialog**

### 3.3 Folder Selection Dialog

Select the folder where you want to install FliteDeck. You can accept the default or use the browse button to select another folder. Click the "Next" button to continue the installation. (See Figure 4)



## Installation Guide

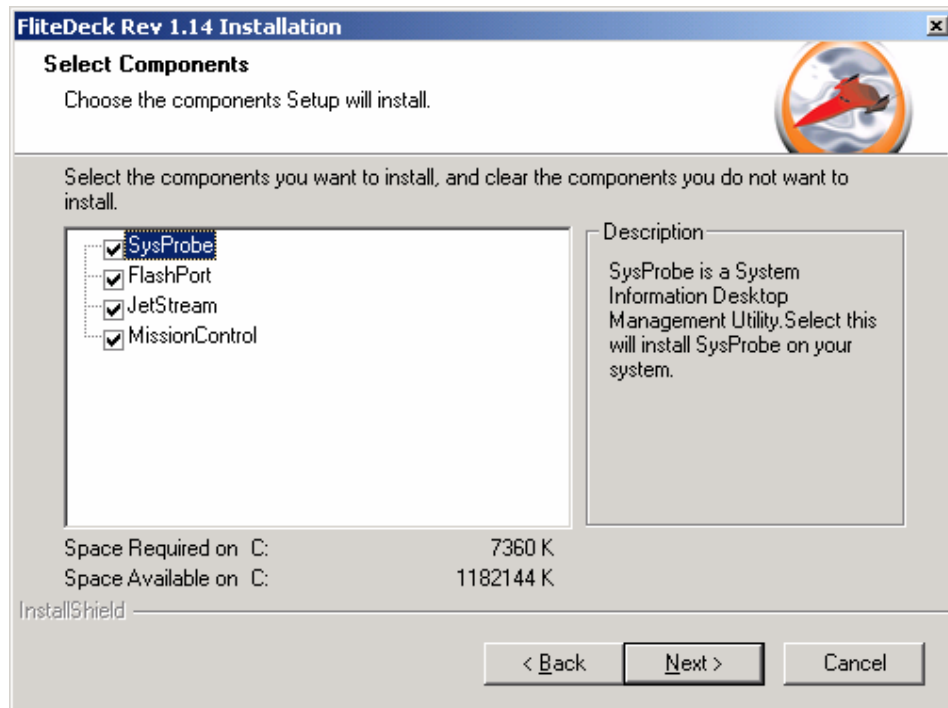


**Figure 4: Folder selection dialog**

### 3.4 Component Selection Dialog

You can choose to install all or some of the four components that form the FlightDeck suite. After selecting which FliteDeck components to install, click the "Next" button. (See Figure 5) **Make sure you have enough hard disk space!**



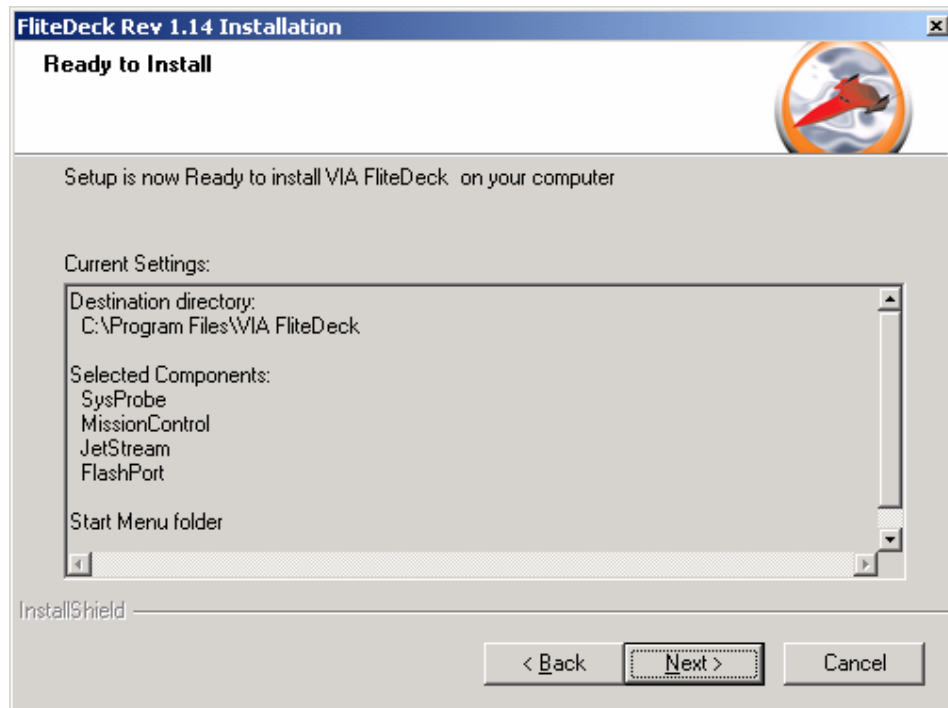


**Figure 5: Component selection dialog**

### 3.5 Review Setting Information Dialog

Click the "Next" button to copy files to your hard drive and create the new program group and icons. Click the "Back" button to go back and modify the settings. (See Figure 6)

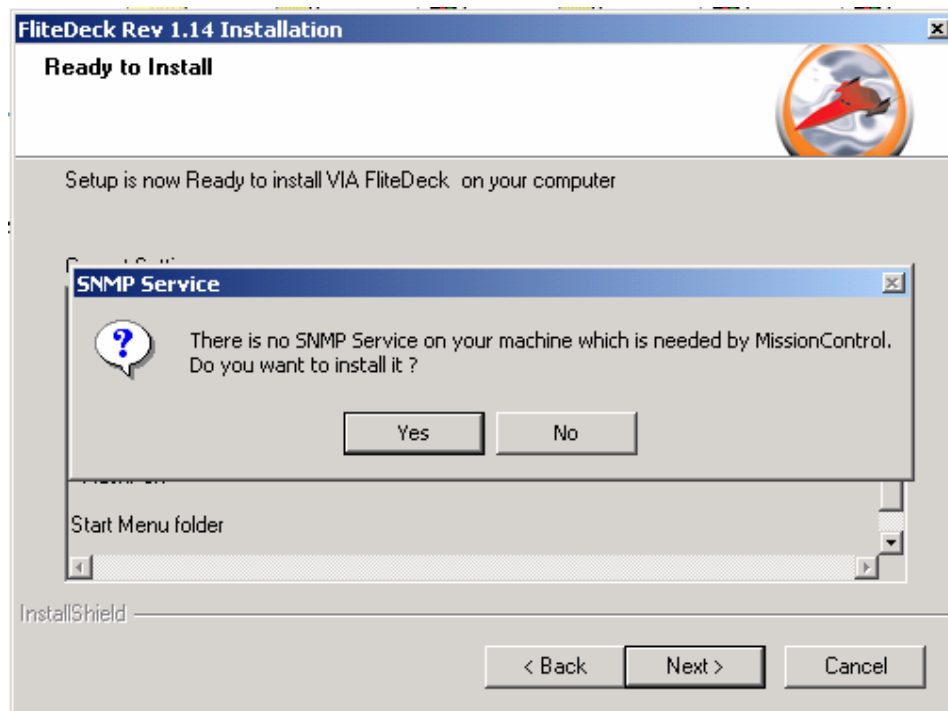




**Figure 6: Review setting information dialog**

### 3.6 SNMP Service Installation Dialog

If you have selected to install MissionControl and there is no Simple Network Management Protocol (SNMP) service on your machine, the setup program will bring up this dialog box (See Figure 7). If you click the "Yes" button then Please follow the steps in 3.6.1 or 3.6.2.



**Figure 7: SNMP Service Installation Dialog**

### 3.6.1 Install SNMP package on Windows2000/WindowsXP

By choosing to install SNMP, the installation process will begin. Please follow the instructions set out in the Windows2000/WindowsXP installation path.

### 3.6.2 Install SNMP package on Windows98/WindowsME

**Note:** The SNMP component is under \tools\reskit\netadmin\snmp\ in the Windows98 installation CD. The user can use the Windows98 CD as a substitute for the WindowsME CD, as there is no SNMP package included in the WindowsME installation CD.

#### 3.6.2.1 Network setup dialog box

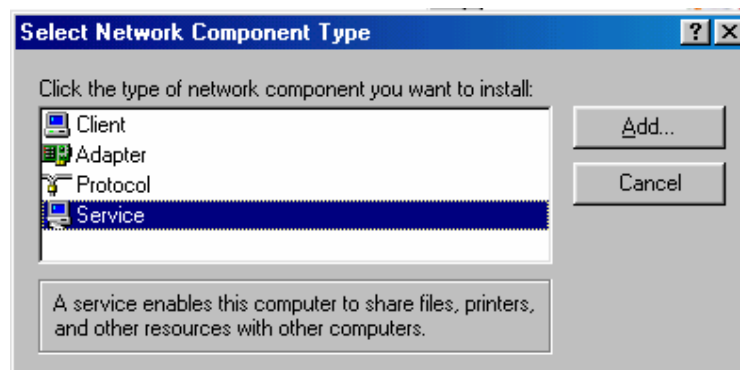
The Installation program will bring up a Network setup dialog box. (See Figure 8)



**Figure 8: Network Setup**

### 3.6.2.2 Select Network Component Type dialog box

Click the "Add" button and a pop up "Select Network Component Type" dialog box will appear, as shown in Figure 9.



**Figure 9: Network Component Type**





## Installation Guide

### 3.6.2.3 Select Network Service dialog box

Select the "Service" option and click the "Add" button. This will bring up a "Select Network Service" dialog box, as shown in Figure 10.

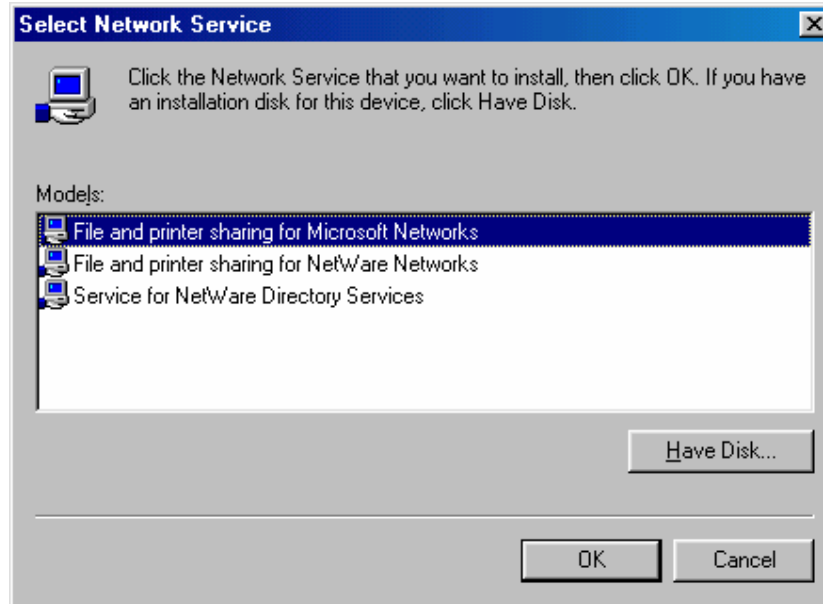


Figure 10: Select Network Service

### 3.6.2.4 Install From Disk dialog box

Click the "OK" button and the "Install from Disk" dialog box will appear. Select `\tools\reskit\netadmin\snmp\` as the location and click the "OK" button, as shown in Figure 11.

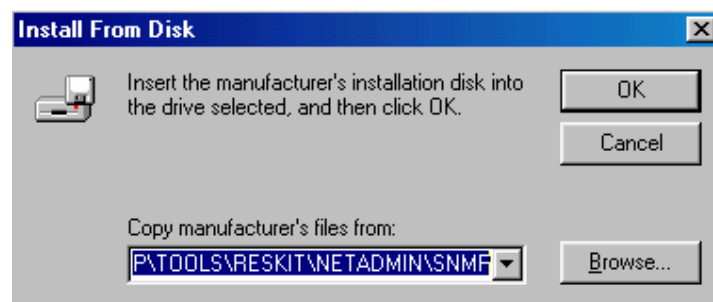


Figure 11: Install From Disk

## 3.7 Setup Completion Dialog

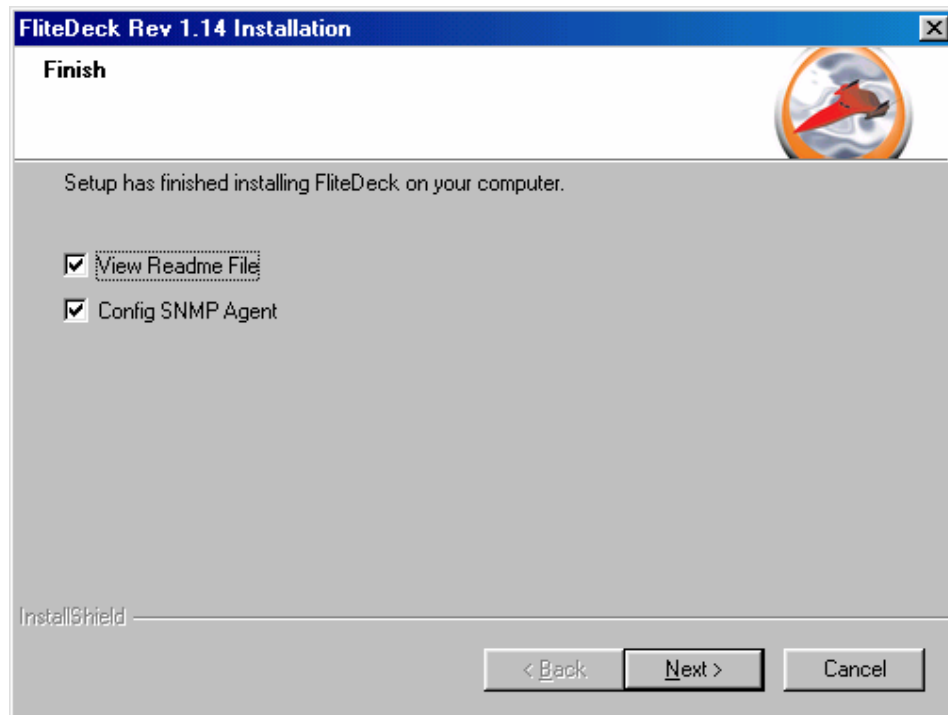
### 3.7.1 On Windows2000/WindowsXP

Click the "Finish" button to finish the FliteDeck Rev 1.14 installation process, as shown in Figure 12.





## Installation Guide



**Figure 12 Setup completion dialog**

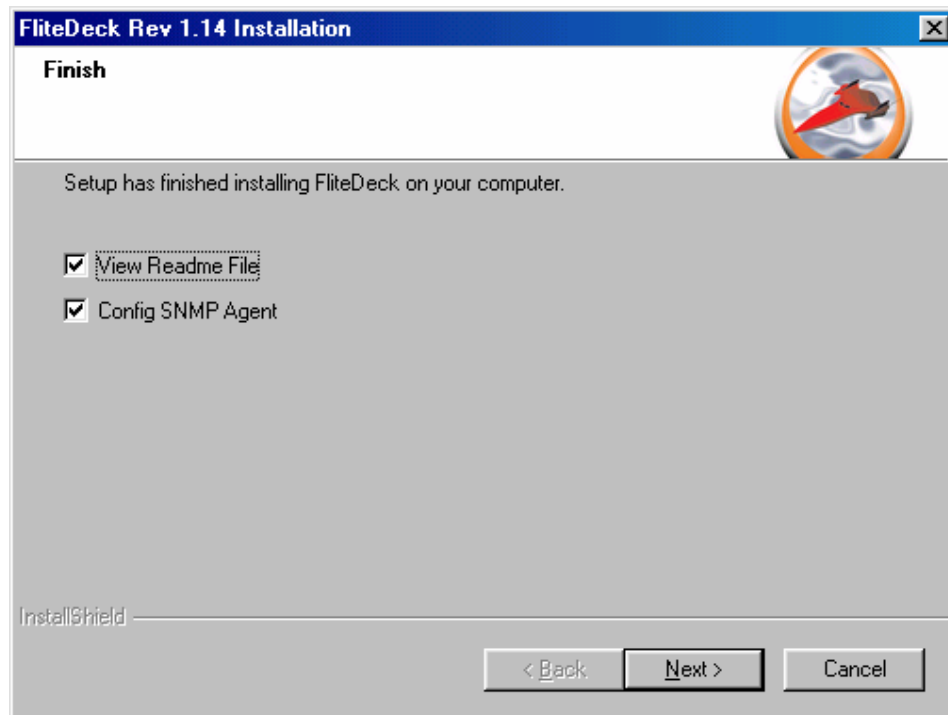
### 3.7.2 On Windows9X/WindowsMe

Click the "Next" button and go to the finish dialog box. Clicking the "Cancel" button will terminate the installation. (See Figure 13)





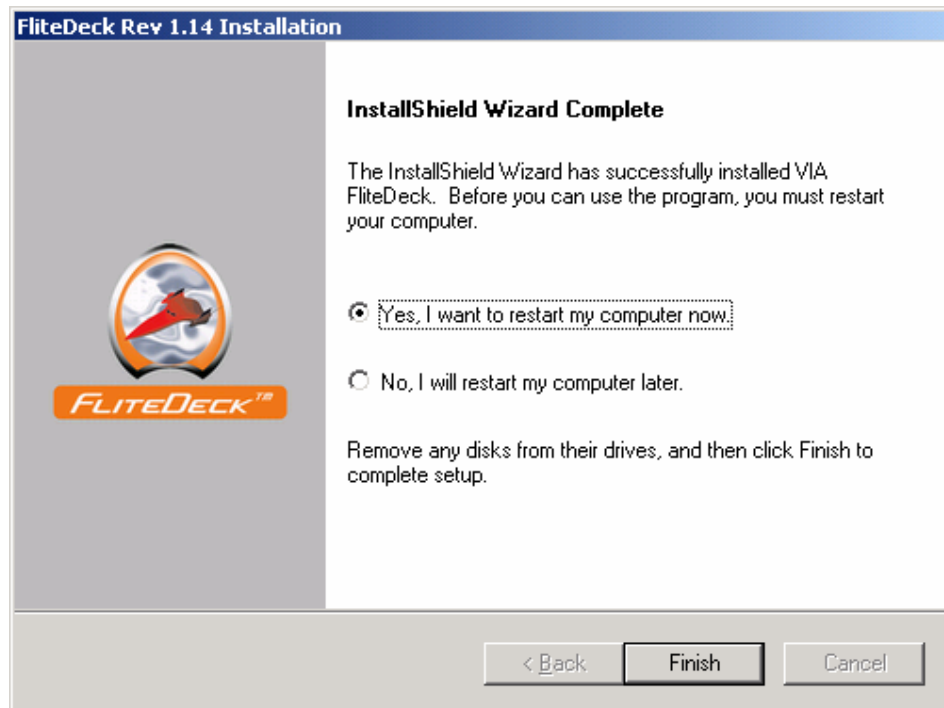
## Installation Guide



**Figure 13: Setup Finish dialog**

Select the "Yes" option if you want to reboot the machine or "No" if you want to reboot the system later. Then click the "Finish" button to finish the FliteDeck Rev 1.14 installation process. (See Figure 14)





**Figure 14: Reboot**

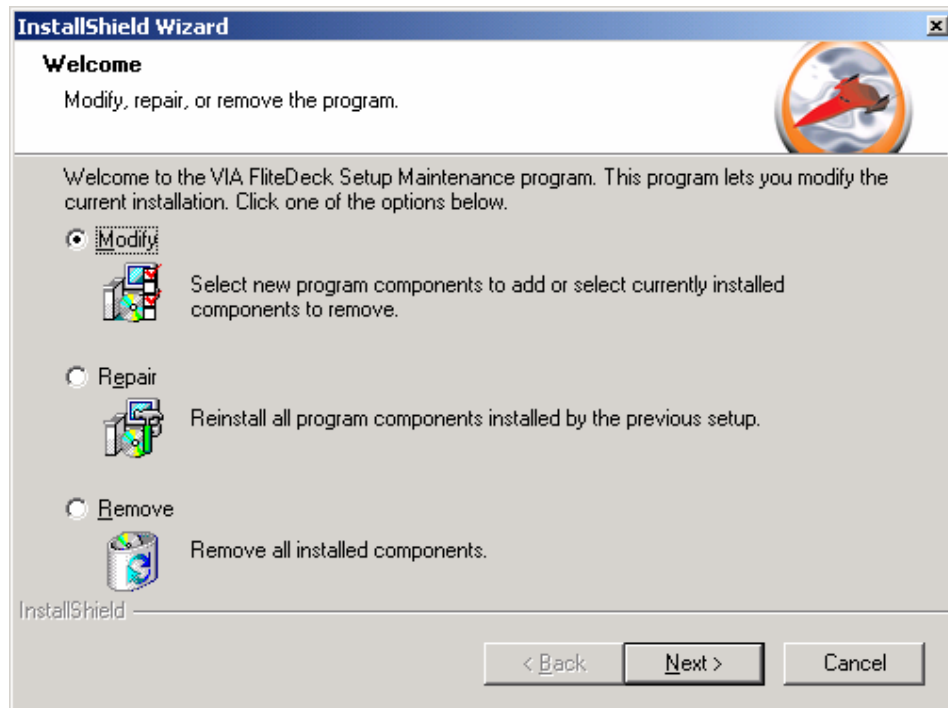
## 4 Repeat Installation

If this is not the first installation of FliteDeck 1.14, please follow these steps.

### 4.1 Click the **setup.exe** file

This will bring up a dialog box, as shown in Figure 15. Select "Modify", "Repair" or "Remove", then click the "Next" button.





**Figure 15 Maintenance Welcome Dialog**

#### **4.2 Review the previous steps (3.4 - 3.7) to finish the installation**

**Note:** VIA has made every effort to ensure the accuracy of the content of this manual. However, it is possible that it may contain technical inaccuracies or typographical or other errors.

VIA will assure no liability for any inaccuracy found in this publication, nor for damages, direct, indirect, incidental, consequential or otherwise, that may result from such an inaccuracy, including without limitation loss of data or profits.

VIA provides this manual "as is", and does not issue a warranty of any kind, express or implied, including without limitation implied warranties of merchantability or fitness for a particular purpose.

VIA reserves the right to amend the design without prior notice and does not guarantee absolute accordance with the actual product. Please contact the local retailers if any additional information is needed.